

## Installation

1. Download the pfTransferAgentInstall.exe file from the location as provided to you.
2. Launch the **pfTransferAgentInstall.exe** file.



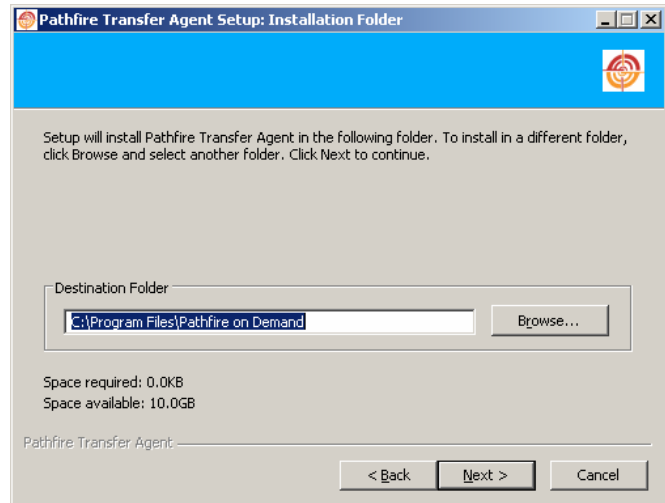
3. When the Welcome screen displays, click **Next>**.



4. In the Destination window, accept the directory shown, or click the **Browse** button and specify a new directory.

**NOTE:** *The directory you specify or select here is the directory into which the Pathfire Transfer Agent software is installed. This is NOT the directory into which the \*.arc files are downloaded.*

5. Then click **Next>**.



# Pathfire Transfer Agent QUICK INSTALL GUIDE

6. In the next window, specify the following:

- **DMG Server IP Address.** Type the IP address of the DMG server as provided to you by Pathfire.
- **Pathfire on Demand Contents Directory.** Specifies the directory into which the downloaded \*.arc files are saved.

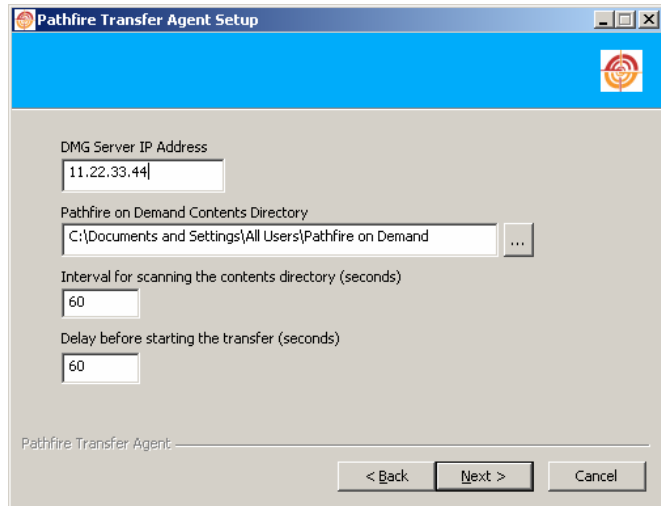
If you click the **Browse** button and select a directory other than the default shown, an information window displays regarding non-shared directories (see message at right).

- **Interval for scanning the directory (seconds).** Indicate the number of seconds at which the directory should be scanned for new content.
- **Delay before starting the transfer (seconds).** Specify the amount of time the system should wait before beginning transfer of any files. This delay is used to ensure that the file download has been completed. For example, the system will scan the directory based upon the scan interval (e.g., 15 seconds) and if no changes are detected (the files have not increased in size) when the delay time has been reached, the transfer begins.

7. When all entries are made, click **Next>**.

8. Some background processing takes place, then the Choose Components window displays. Select the installation type.

- **Automatic Service.** If specified, the service is started automatically after installation and on system reboot. Use the Windows Services Control Panel (Start > Programs > Control Panel > Administrative Tools > Services) to start or stop the service.
- **Manual Service.** If specified, the service is installed but not started automatically. The service is not started at system reboot. It must be started from the services control panel (Start > Programs > Control Panel > Administrative Tools > Services).
- **Desktop Application.** If specified, the Transfer Agent is installed as a desktop application. To stop the Transfer Agent, use the Windows Task Manager (Ctrl+Alt+Del).



**Pathfire Transfer Agent Setup**

DMG Server IP Address: 11.22.33.44

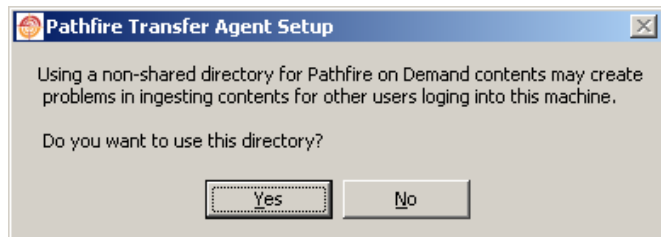
Pathfire on Demand Contents Directory: C:\Documents and Settings\All Users\Pathfire on Demand

Interval for scanning the contents directory (seconds): 60

Delay before starting the transfer (seconds): 60

Pathfire Transfer Agent: \_\_\_\_\_

< Back    Next >    Cancel

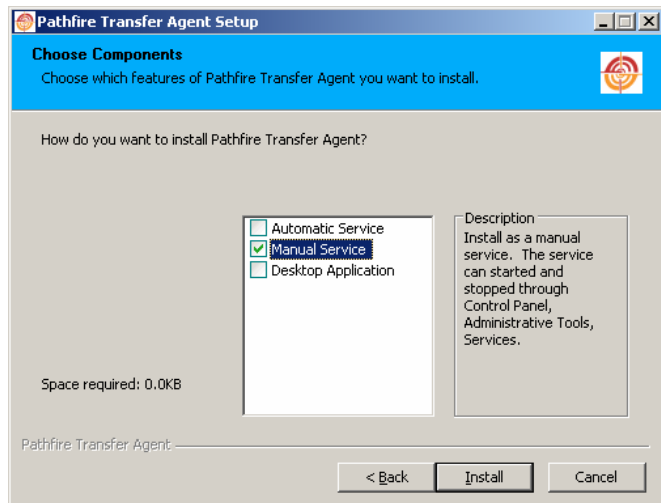


**Pathfire Transfer Agent Setup**

Using a non-shared directory for Pathfire on Demand contents may create problems in ingesting contents for other users logging into this machine.

Do you want to use this directory?

Yes    No



**Pathfire Transfer Agent Setup**

**Choose Components**

Choose which features of Pathfire Transfer Agent you want to install.

How do you want to install Pathfire Transfer Agent?

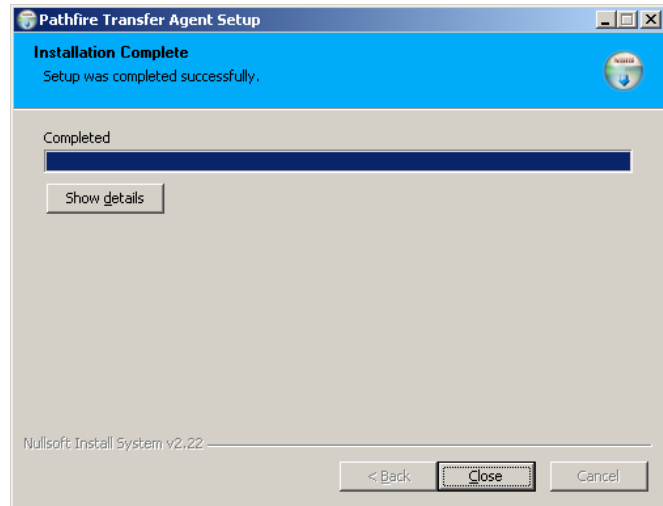
Component	Description
<input type="checkbox"/> Automatic Service	Install as a manual service. The service can started and stopped through Control Panel, Administrative Tools, Services.
<input checked="" type="checkbox"/> Manual Service	
<input type="checkbox"/> Desktop Application	

Space required: 0.0KB

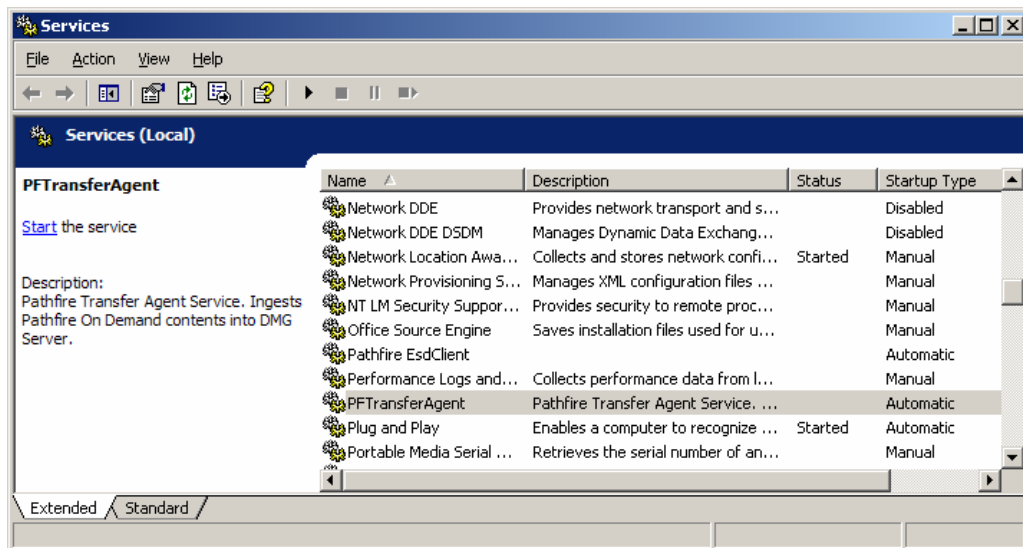
Pathfire Transfer Agent: \_\_\_\_\_

< Back    Install    Cancel

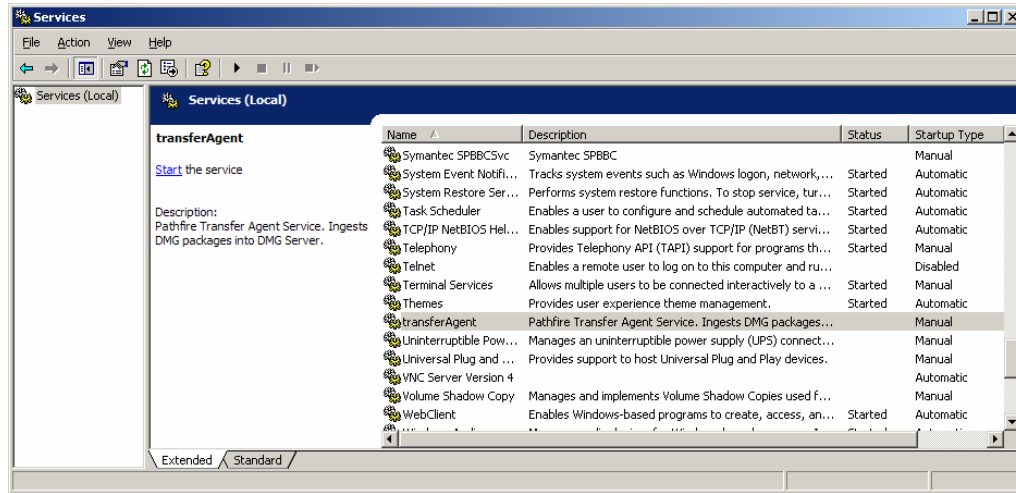
9. Click **Install**>. Some more background processing takes place. When the installation is complete, a confirmation window displays.
10. To view the details of the installation, click the **Show details** button.
11. Click **Close**.



12. Check to verify that the services have been installed by doing the following:
  - Open the Windows Control Panel (**Control Panel > Administrative Tools > Services**).
  - Under the *Name* heading, locate the **PFTransferAgent** item.
  - If *Automatic* was selected, verify that the *Startup Type* shows **Automatic**. You can then use the **Stop** and **Restart** options, as needed.



- If *Manual* was selected, click the **Start the service** hyperlink.



13. If you have opted to install the desktop icon, verify the icon does, in fact, appear on the desktop. *If not, rerun the installation.*

You are now ready to download \*.arc files and save them to the specified directory so that they are available for viewing within DMG. *Refer to the Pathfire Transfer Agent QUICK START GUIDE for further information.*

## Log Files

The log files are created in the directory **<install dir>\logs\TransferAgent**. The files are rolled over into a new file when the file size reaches 1MB. A new log file is created on starting the new instance.